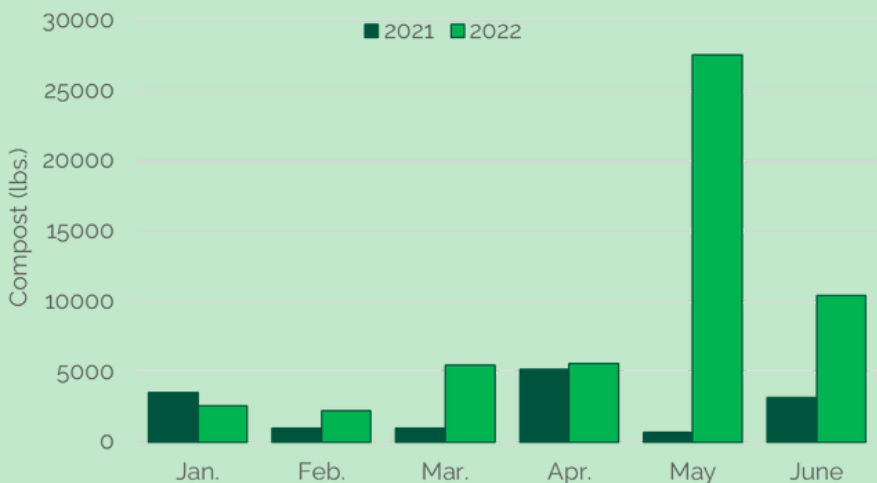
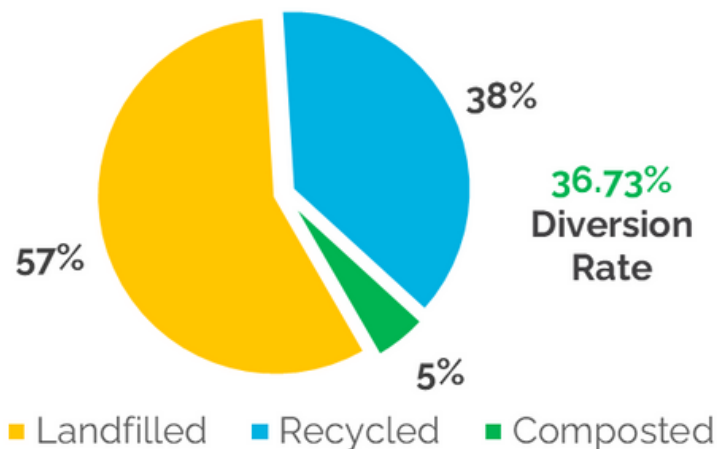


This month we had:

- 212,817** lbs of total waste
- 121,993** lbs were landfilled
- 45,943** lbs were recycled
- 10,412** lbs were composted
- 34,469** lbs from Hard to Recycle*

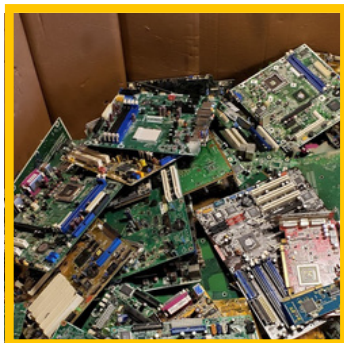
*Specialty items accepted by the ASCP



Compost Diversion Rates:

62.21% Decrease
from May 2022
226.6% Increase
compared to June 2021

Did you know...



This month, the ASCP collected and recycled **8,423** lbs. of E-Waste with CO local company, **Blue Star Recyclers.**

Environmental Impacts

We avoided **41.3** metric tons of GHG through our waste diversion efforts.

Or the equivalent to:



5.2 homes' yearly energy use



102,458 miles driven by passenger vehicles



48.8 acres of forest sequestering carbon