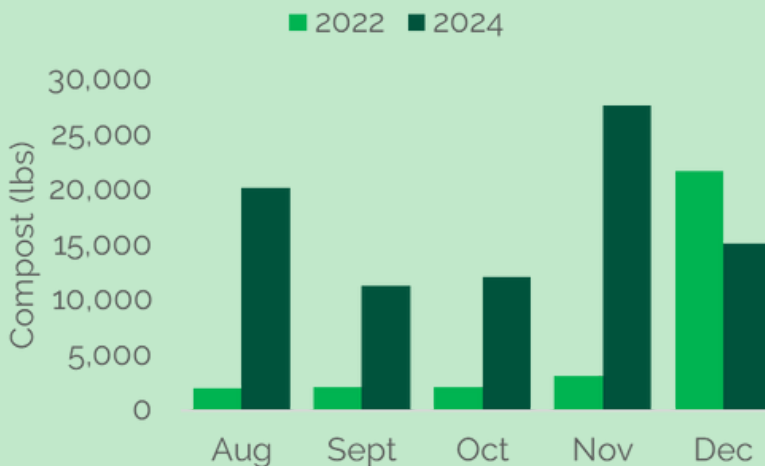
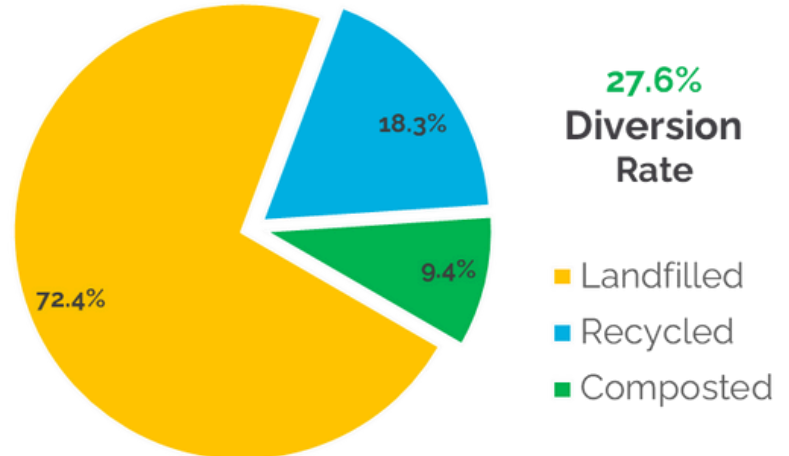


This month we had:

162,245 lbs of total waste
116,536 lbs were landfilled
29,388 lbs were recycled
15,093 lbs were composted



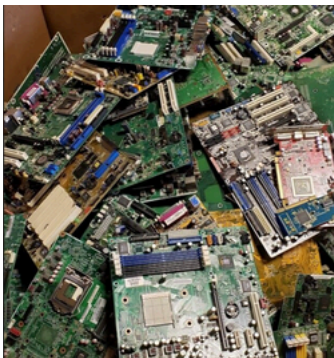
Compost Outpost Diversion Rates:

November 2024: 9.4%

November 2022: 11.4%

*2023 data excluded due to contract abnormalities

Did you know. . .



To date, the ASCP's Hard-2-Recycle Program has collected 3,500 batteries and kept these hazardous items out of Denver's landfills!

Environmental Impacts

We avoided **20.1 metric tons of GHG** through our waste diversion efforts.

Or the equivalent to:



2.7 homes' yearly energy use



51,286 miles driven by passenger vehicles



20.2 acres of forest sequestering carbon